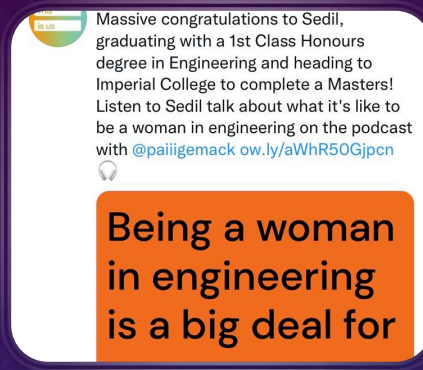
The background is a deep blue gradient with a starry texture. Overlaid on this are several white, semi-transparent circular and arc-like patterns. Some of these arcs have degree markings, such as 150, 160, 170, 180, 190, 200, 210, 220, 230, 240, 250, and 260. There are also smaller concentric circles and dashed lines, some with arrows indicating a clockwise direction. The overall aesthetic is scientific and futuristic.

ADVENTURES IN TIME AND SPACE: STORIES FROM OUR FUTURES

PROFESSOR SHÂN WAREING
DEPUTY VICE CHANCELLOR
UNIVERSITY OF NORTHAMPTON

- Paradoxes
- Universities located in place – pros
- Universities independent of time and place – pros
- Hybrid – pros
- Adventures in time and space. What if...
- What do we need to do?

PARADOXES

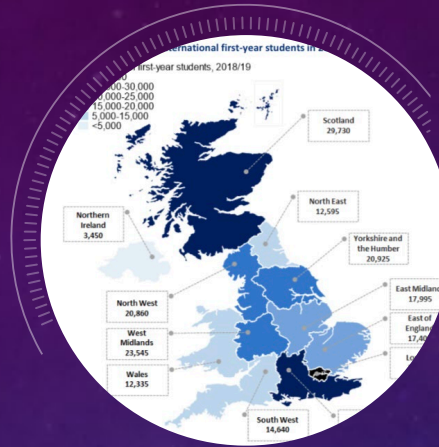


- Can the benefits of pandemic working, studying and living exist simultaneously with the benefits of pre-pandemic working, studying and living?
- Can all demographic groups benefit or must there be winners and losers?
- Can we eliminate our own bias in our plans?

UNIVERSITIES LOCATED IN PLACE

- PROS

- Community and regional benefits
- Structure and comfort of physical schedules and routines
- Mental health benefits of being in a physical community
- Access to resources and facilities
- Essential for users of some equipment, for research with living things, some carers and therapists
- Support for transitions and reinvention
- Serendipity





UNIVERSITY
OF LONDON



UNIVERSITIES INDEPENDENT OF TIME AND SPACE - PROS

- Benefits to young families and carers
- Better use of time than commuting
- Reduction of scope 3 emissions
- Cost savings
- r



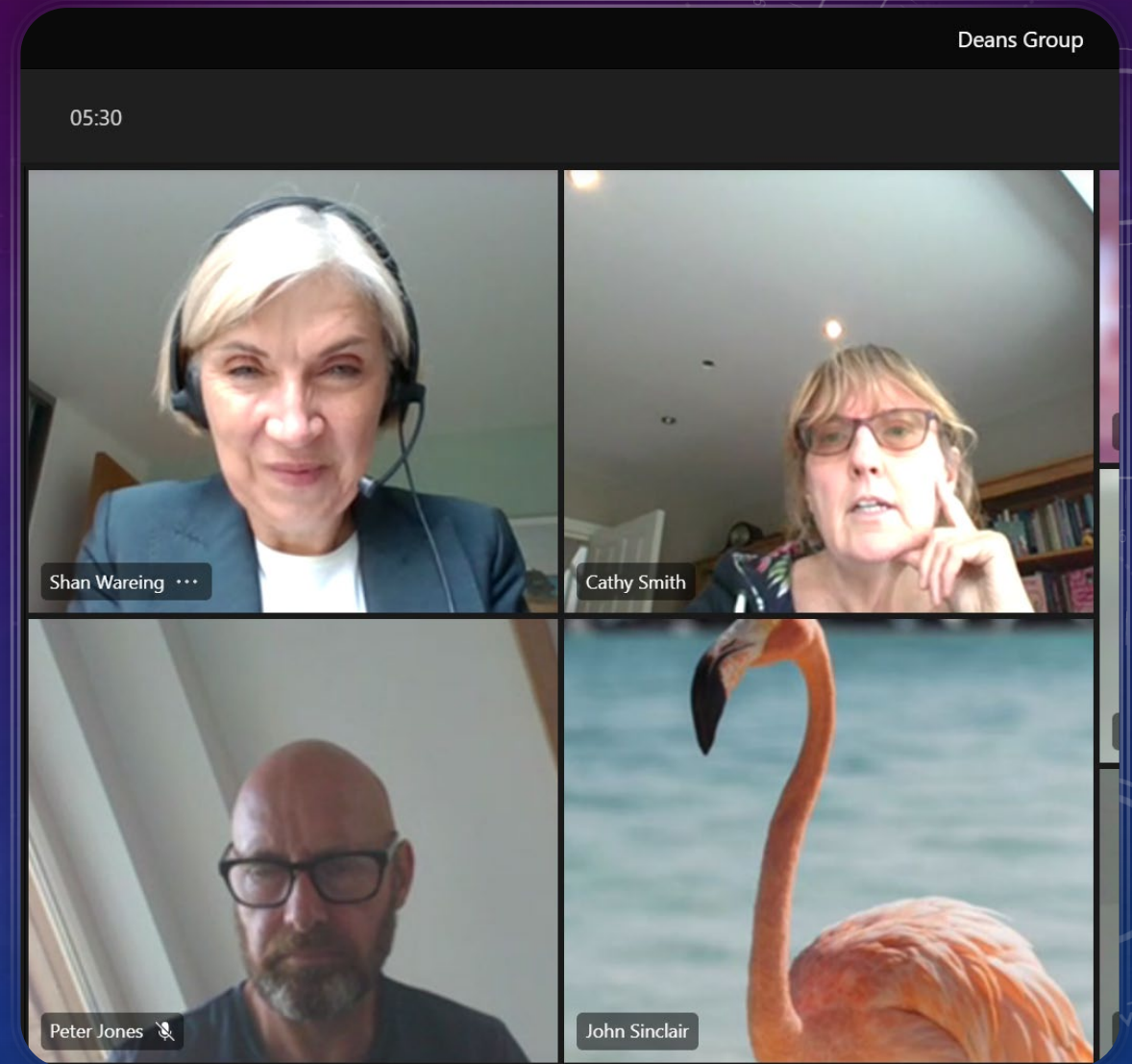
The Open
University



HYBRID

– PROS

- Better use of space – dispensing with wasteful and isolating single occupancy offices; more social spaces and green spaces
- Better use of online meetings and events – to include external or international speakers and experts; more inclusive (chat and hand raising functions); audibility and sub titles
- Combining life events with work and study – option to participate flexibly when sick or family commitments prevent travel.





ADVENTURES IN TIME AND SPACE

WHAT IF...

...these choices and their impacts were always present, and we have been given the gift to understand our choices and their consequences more clearly

...we have learnt about our own ability to adapt

...this is not a unique turning point, just regular evolution

...this is a time of great hope and opportunity



WHAT DO WE NEED TO DO?

Have a vision which is about people and place

Set a direction shaped by principles - sustainable, inclusive, supporting mentally and physically healthy communities, open to local people, integrated into the region

In dialogue with users, and particularly marginalised groups

Integrated with IT – a virtual estate to complement the physical estate

THANK YOU

