



Mary Curnock Cook
Woburn House
14 October 2021

The Future of Higher Education

AUDE Big Conversation



Student Futures Commission

- Ensure students' success after the pandemic by contributing to a generous and collaborative effort in the sector to ensure their successful futures
- To make practical recommendations for universities, and future plans for the sector and government
- To curate ideas, insights and learnings from all stakeholders in higher education that can be widely disseminated and used to enhance the post-pandemic student experience.
 - Expert oral evidence
 - Vice Chancellors
 - 40 submissions
 - Special topic bogs





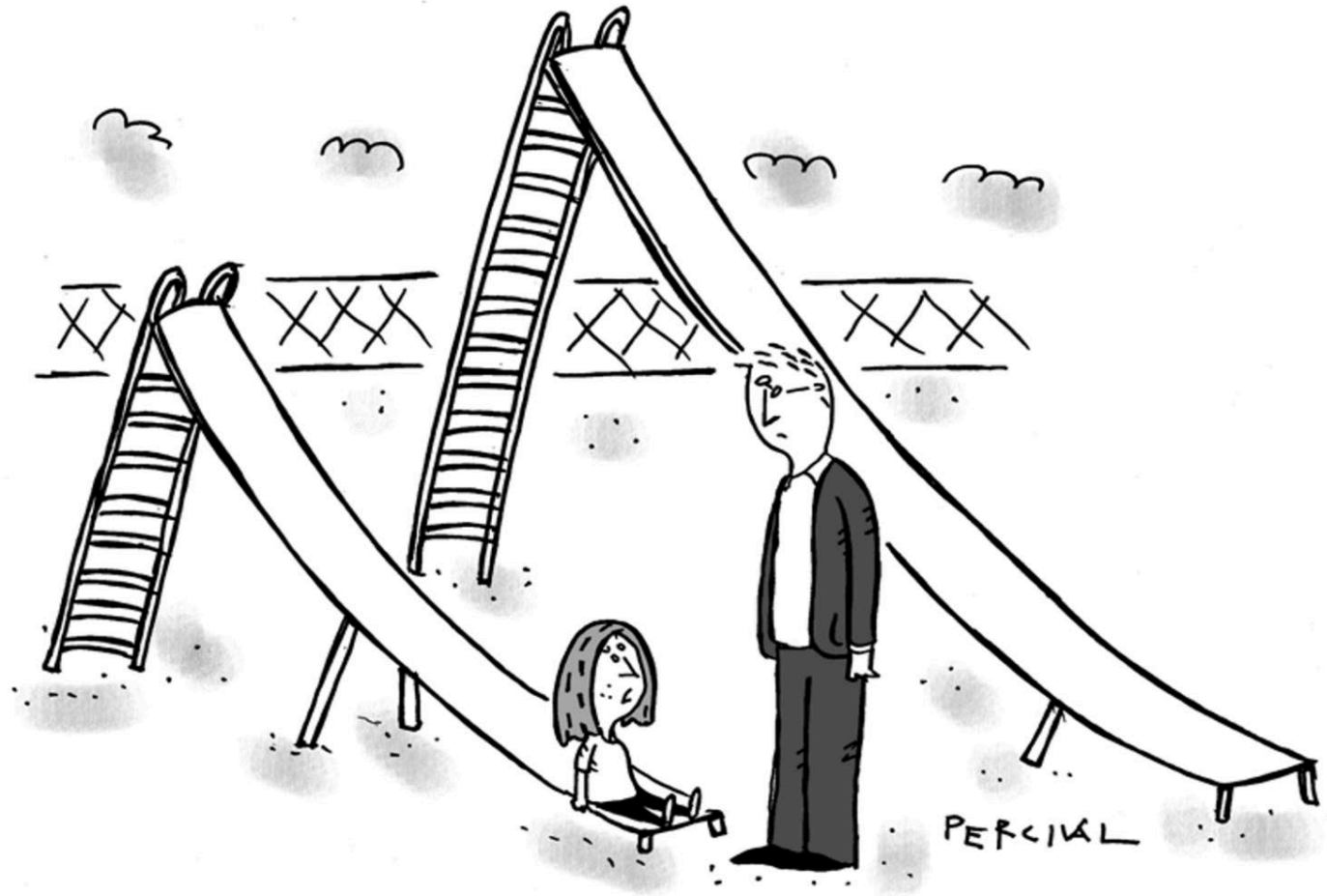
My office journey

- Shared office
- My own office
- Open plan – fixed desk
- Hot desks
- UCAS!
- Home-working
- The 'nowhere' office





Next slide please...



'Next slide please.'



“The future is not what it used to be...”

- | | | |
|----------------------|---|----------------------------------|
| • Physical places | → | • Physical and/or digital places |
| • Teaching | → | • Learning |
| • Blended/Hybrid | → | • Multi-modal |
| • Consultation | → | • Co-creation |
| • Academic outcomes | → | • Graduate outcomes |
| • Volunteering | → | • Service learning |
| • Extra-curricular | → | • Co-curricular |
| • Student Engagement | → | • Belonging |



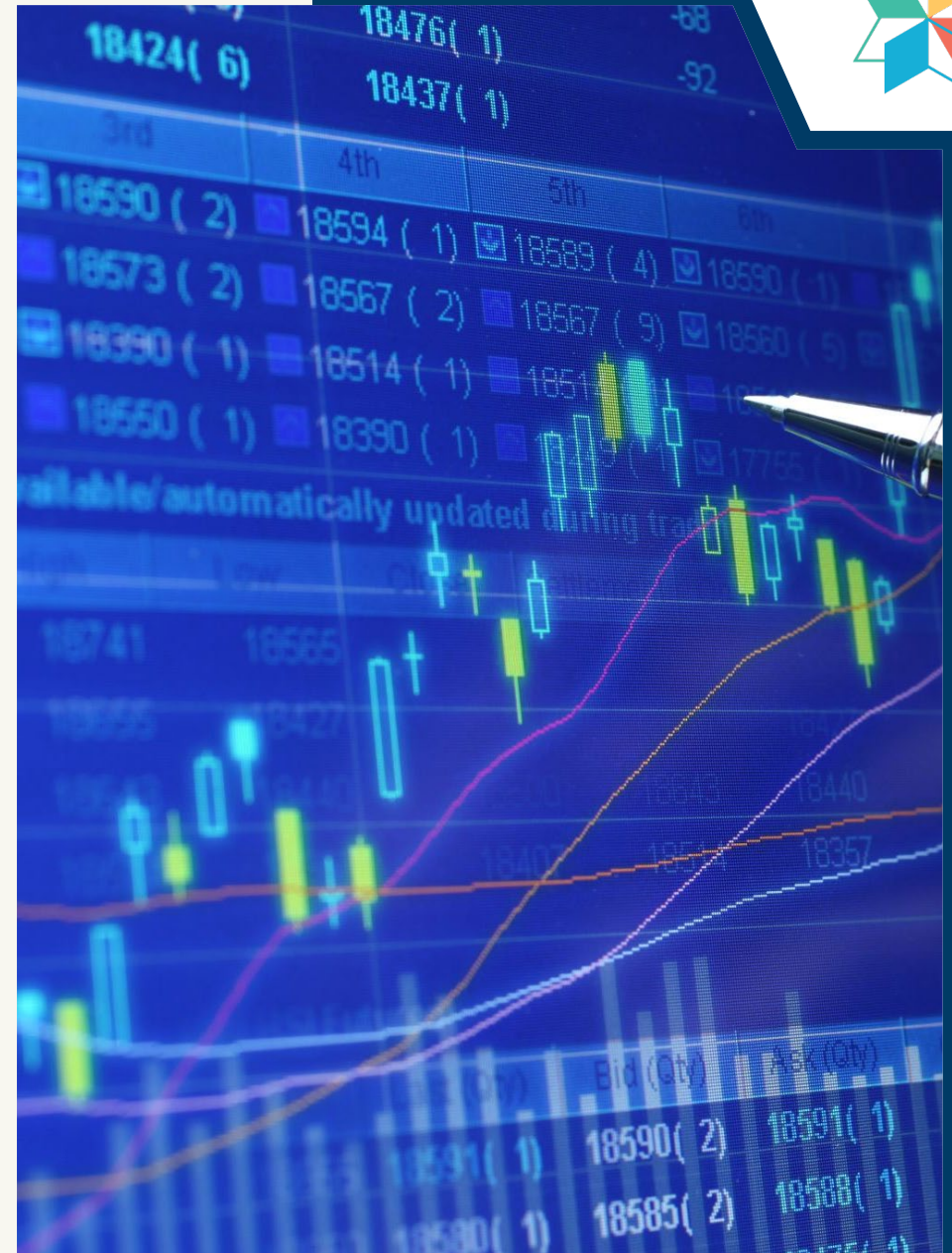
Physical and digital places

- Balance of investment in physical vs digital

How do you create community and 'belonging' in digital places?

What does teamwork look like in digital places?

Do your digital libraries encourage social learning?





Check out StudyStream.com



Home **Focus Room** How it works Events Community Contact Us





Teaching vs Learning; Blended vs ‘multi-modal’

- What do lecture theatres, seminar rooms, study spaces, etc look like if the focus is on learning rather than teaching?
- “Blended” and ‘Hybrid’ are the *wrong* words!
- How do digital resources *complement* and *augment* learning?
- Student Futures visit to Queen Mary University London
 - Multi-modality designed in
 - Trained 800 lecturers over the summer
 - Assistants with technical and learning support skills
- ‘Learning journey’ overtakes ‘student journey’
- (‘data journey’ still important)



Co-creation vs consultation

- Student Unions reported that this was a big win during the pandemic crisis

It changed the dynamic between SLTs and SUs



Graduate outcomes



Graduate vs academic outcomes

- It's all about employability, work readiness
- The rise of the 'no-collar worker' – *“around here we don't call them jobs”*
- How do university facilities support work readiness?

Co-curricular

- 'Service learning' is conceptually different to 'volunteering'
- Can it be co-curricular rather than extra-curricular?
- Check out MMU's RISE programme
 - Credit bearing
- Important for marginalized, disadvantaged or under-represented groups
- Social capital



‘Belonging’ is the new Student Engagement!

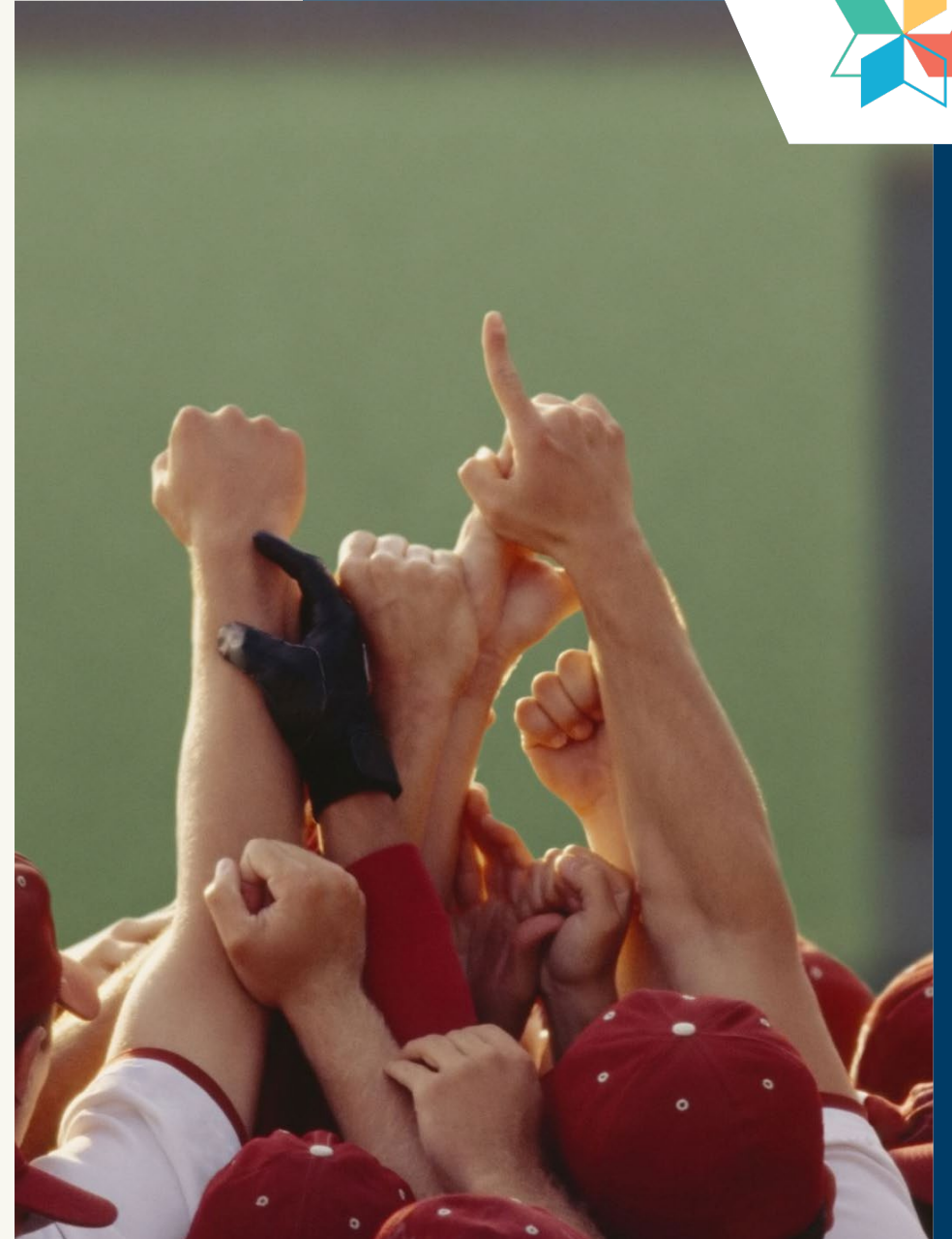
Belonging in:

University

Faculty/School

Cohort

Social and special
interest groups





The ‘nowhere’ office?

If we don't get it right for
colleagues, we won't get it
right for students

(co-create? Belonging?)





Recap:

“The future is not what it used to be...”

- | | | |
|----------------------|---|----------------------------------|
| • Physical places | → | • Physical and/or digital places |
| • Teaching | → | • Learning |
| • Blended/Hybrid | → | • Multi-modal |
| • Consultation | → | • Co-creation |
| • Academic outcomes | → | • Graduate outcomes |
| • Volunteering | → | • Service learning |
| • Extra-curricular | → | • Co-curricular |
| • Student Engagement | → | • Belonging |

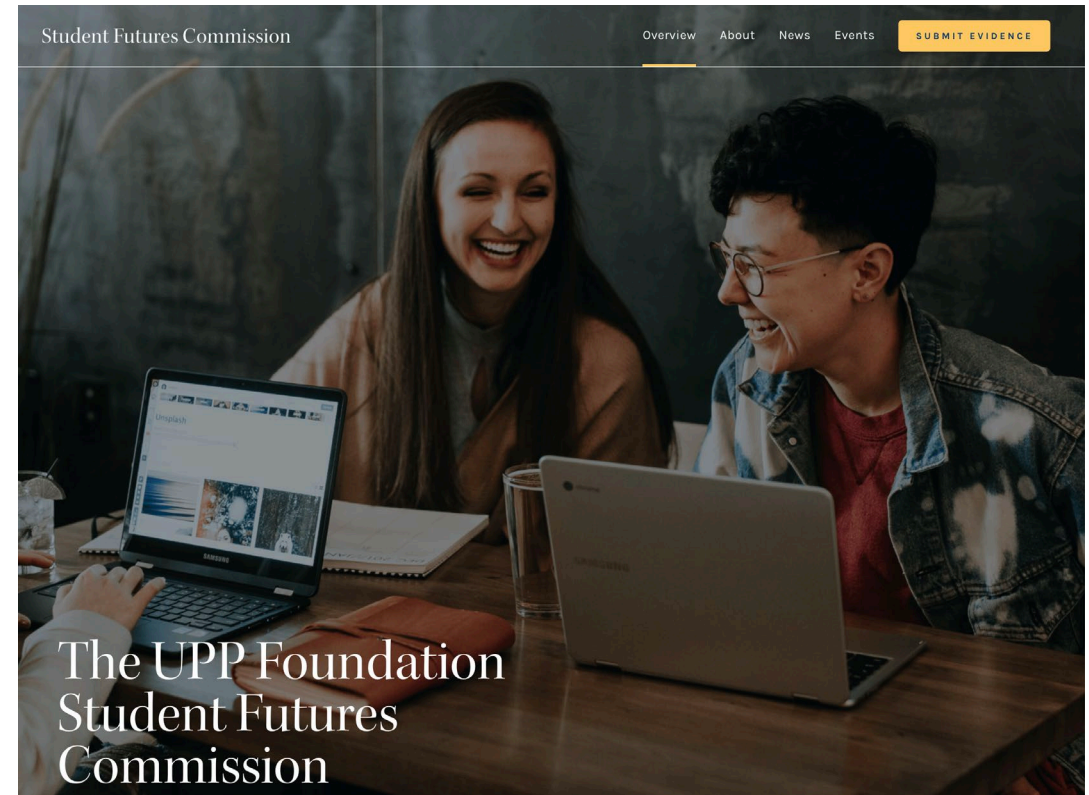


Please contact us...

- <https://upp-foundation.org/student-futures-commission/>



@MaryCurnockCook





Thank you!

