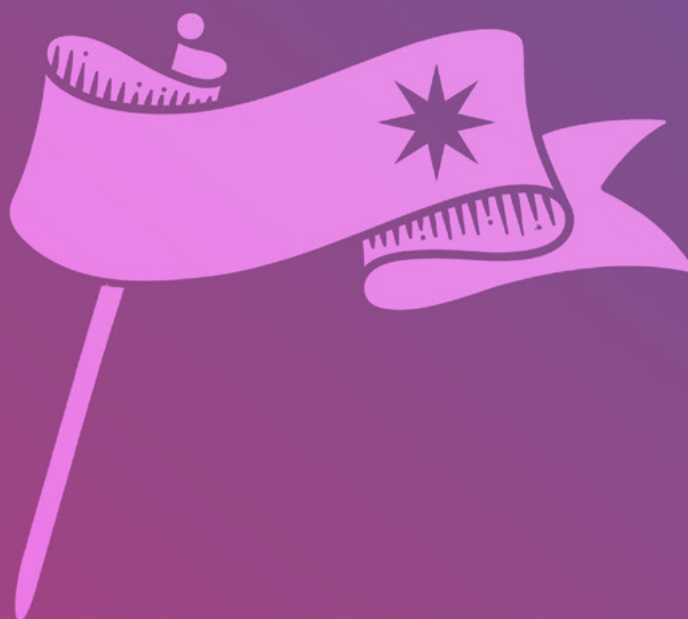


#AUDE23
#workwithAUDE



Our place in the world

AUDE Conference **2023**

Headline supporters

ATKINS

FAITHFUL+GOULD

Members of the SNC-Lavalin Group



Scan the QR code to visit the
Decarbonomics™ website



Decarbonomics

Powered by Carbon Data Insights

Buildings

Decarbonomics™ provides a data driven portfolio level approach to enable owner and occupiers of building portfolios of any scale (whether you own or lease them), to successfully decarbonise your entire building estate through the development and implementation of cost effective and programme optimised net zero pathways.



COST EFFECTIVE
DECARBONISATION



ENTERPRISE LEVEL
REPORTING



HEALTHIER
AND RESILIENT
PORTFOLIOS



ROBUST
INVESTMENT CASES



EMPOWERED
DECISION MAKING



QUALITY CONTROL
OF RETROFIT
AND OPERATION

Designing for people:
Predicting the Future.
Optimising your Estate.
Looking beyond project lifecycles.

Engineering. Design. Project Management.

www.atkinsglobal.com www.fgould.com

Thank you to our supporters

HEADLINE SUPPORTERS

ATKINS

FAITHFUL+GOULD

Members of the SNC-Lavalin Group



ADDITIONAL SUPPORTERS



Networking Dinner Drinks Reception



Welcome Dinner



AUDE Awards



Networking Dinner



Water Bottles and Digital



Notebook and Pen



Gala Dinner Drinks Reception



Digital



Digital



Room Drop Gifts

Contents

Overview of AUDE	5
Chair’s Welcome	6
AUDE 2023 is going greener	7
Welcome Message from Liverpool	8
About the Venue	9
Campus Map	10
Venue Map	12
Programme	15
Session Synopses	22
Conference and Networking Dinner Host	30
AUDE Awards and Gala Dinner Host	31
Exhibition Plan	32
Exhibitor List	33
Conference Supporter Profiles	34
Useful Information	43
This Year’s Charity	45

#AUDE23
#workwithAUDE

Overview of AUDE

AUDE promotes excellence in the strategic planning, management, operation and development of higher education estates and facilities. AUDE offers membership to publicly funded UK bodies whose primary remit is higher education teaching and/or research. AUDE has a growing number of private providers of higher education and international universities. There are also business partner opportunities for commercial bodies.

We are the UK’s leading source of expert information about the university estates and facilities sector and work to ensure estates professionals are equipped to take a strategic and proactive approach. AUDE is a not-for-profit organisation. Any funds generated through the activities of the Association are used to fulfil its objectives and mission.

AUDE’s members are generally represented by the most senior member of staff responsible for managing, planning, constructing and maintaining all types of accommodation for higher education institutions. Though arrangements vary, most directors of estates are also involved in managing a wider range of capital projects and services including cleaning, security, grounds maintenance, space planning and management, car parking and traffic and, in some institutions, additional services such as catering, conference and sports facilities, insurance, furniture and equipment and printing.

Our membership offer is growing, and we provide benefits and services for all those working in estates and Facilities Management within education.

A primary objective is to make sure that university estates provide best value for money and contribute positively to a high-quality student experience. Estates are one of the university’s largest assets, AUDE and its members are at the forefront of ensuring that universities use this valuable asset to full advantage. There is a clear link between the buildings, facilities and accommodation on offer at a university and the desirability of the establishment to potential students and staff.

Our members

AUDE currently has over 3,500 individual members from;

- 180 UK and Ireland higher education institutions
- 7 international institutions
- 9 business partners
- 2 alternative providers

Joining AUDE will allow your organisation to develop and grow relationships with estates and FM professionals in the HE sector. Speak to a member of the AUDE team or visit aude.ac.uk/membership for further details.

AUDE contact details

Jane White,
AUDE Executive Director,
Association of University
Directors of Estates,
3 Holywell Drive,
Loughborough University,
Loughborough
LE11 3TU

T: 01509 228836
E: info@aude.ac.uk

Chair's Welcome

This association gets busier and busier.

As AUDE Chair of course I'm going to say that this isn't an accident. It's a result of choices made over a number of years. We've made a conscious decision to support the development of a widening circle of special interest groups working under the AUDE umbrella, and for these to be strategic in nature, so we can develop the high level thinking in these specialist areas that is needed. Our recently formed group for risk and assurance is an example and I look forward to more special interest groups potentially coming on stream in the second half of my tenure as Chair.

We've also made a conscious decision in recent years to broaden the focus of the association, so that despite our name, we support colleagues at other levels of seniority than simply the director role. It means we get a broader range of inputs, and get to hear from specialists including this year from energy managers – and there have been few more critical roles than that in 2022-23. We're actively supporting colleagues up the career ladder, most obviously through our Summer School residential programme, now in its fifth year; but also through the year-round programme of digital learning events that cover every aspect of our roles. One highlight of that programme for me has been the EDI XII series of webinars on equality, diversity and inclusion issues. A new group dedicated to lead AUDE's thinking on EDI has also been formed and we'll be sharing more of our thinking soon.

#AUDE23
#workwithAUDE

To summarise, this year there is far too much to cram into a single nutshell when thinking about AUDE highlights. The Estates Management Report remains our key publication, and this year we have a digital version for the first time – I encourage you to use that. We've reworked the Sustainability Leadership Scorecard, which remains the best tool of its kind that we have in HE to support us on our net zero journeys. We look at net zero as a whole AUDE team, and with the help of our Sustainability Advisory Group we support colleagues on their net zero journeys. This year we have also been looking at the challenges of recruitment and retention with colleagues from Universities HR to guide our thinking. In other words wherever we viably can do given the small size of our salaried team and the willingness of member volunteers to undertake these projects, we intervene to the benefit of the membership.

Thank you for joining us at the AUDE Conference 2023, here in Liverpool. On behalf of us all, thank you to everyone that makes this special event possible – delegates and speakers, exhibitors and organisers. Your work is very much appreciated. In my experience every AUDE Conference is a good one, with things to learn, interesting conversations to join, the AUDE Awards, new people to meet and old colleagues to catch up with. I know you'll enjoy yourselves with all of this and more this week.



Umesh Desai
Director of Estates, Nottingham Trent University
and AUDE Chair

AUDE 2023 is going greener

At the AUDE 2023 Conference we will be encouraging delegates, supporters and exhibitors to be as environmentally friendly and sustainable as possible, by including the following initiatives:

The big five

1. Minimal paper giveaways on stands and in delegate bags
2. The introduction of an electronic data capture scheme for exhibitors and delegates, in lieu of business card swaps
3. Minimal single use plastics throughout conference
4. Recyclable or reusable event collateral throughout conference
5. Recycled or reusable sponsored delegate items



Welcome Message from Liverpool



Syd Cottle
Director of Estate Management
University of Liverpool and
AUDE Chair Elect

Welcome to Liverpool, and to the AUDE Conference 2023. An especially warm welcome to those who are attending their first AUDE event and for those who have travelled from their home nations. As always, the AUDE team has been working hard to secure the most interesting and thought-provoking material for our discussions. Our theme for this conference is 'Our place in the world'. We'll be looking at the endless cycles of regeneration and growth that have characterised the history of so many of our big cities, none more so than Liverpool. And we'll be asking how universities can continue to play leadership roles locally, nationally and internationally in addressing all of the major challenges that we face. As always there will be a mix of the technical and inspirational, and support for us all as estates leaders.

And we'll be doing all of this in this great city that I was proud to be born in. I hope you'll have a chance to soak some of the place in, and not just in our visits to some of the city's amazing places, such as St George's Hall where we'll announce the winners of this year's AUDE Awards on Wednesday evening, the University of Liverpool's Victoria Gallery and Museum, and Anfield. Thank you very much indeed to everyone for attending and also to those involved for their efforts in planning and making #AUDE23 a success.

#AUDE23
#workwithAUDE

About the Venue



Founded in 1881 as the original 'red brick', the University of Liverpool is one of the UK's leading research-intensive higher education institutions with an annual turnover of £614.9 million, including an annual research income of £145 million. Consistently ranked in the top 200 universities worldwide, we are a member of the prestigious Russell Group of the UK's leading research universities and have a global reach and influence that reflects our academic heritage as one of the country's largest civic institutions.

The University has 31,200 students, 7,900 of whom travel from all over the world to study here, and a thriving community of more than 270,000 alumni in 187 countries. Our global focus has led to the establishment of a university in Suzhou near Shanghai, as well as partnerships with research institutes, universities, industry, governments and foundations all over the world.

The University of Liverpool has a strong heritage of public and global health research and knowledge leadership. Our ideas, innovations and enterprises have helped us respond to grand challenges since our inception. Today, research expertise and knowledge leadership at Liverpool has enabled the University to respond to Covid-19 with agility and at scale, delivering significant impact.

The University is now implementing its Estates Strategy (ES2026+) which outlines our plans to transform existing learning and teaching spaces and create new high-quality research environments. The University is launching its Masterplan for the estate, which envisages £1 billion of investment over the next 15+ years in buildings, landscape and infrastructure.



Campus Map

- A Victoria Gallery & Museum:**
Welcome Dinner - Mon 3rd April
- B Guild of Students:**
Exhibition - Tue 4th-Wed 5th April
- C Teaching Hub 502:**
Conference Sessions - Tue 4th-Wed 5th April

Venue Map



Brilliant minds deserve exceptional facilities



We're Overbury – the UK's leading fit out and refurbishment specialist. We work with top universities across the country to deliver outstanding higher education facilities.



University of Wolverhampton
Angad Paul Building Refurbishment

Winner of the Pagabo Social Value Award 2022 delivered £3.77 of social return for every £1 spent.

Visit us at AUDE stand 34 and play our Wheel of Social Value game



Programme

Monday 3 April 2023

14:00 - 16:00 Williamson Tunnels Heritage Centre	Tour - International Guests and AUDE Members Only
16:00 - 19:00 Novotel Liverpool Paddington Village	Delegate Arrivals, Conference Registration and Accommodation Check-in for Delegates
18:00 - 18:45 Novotel Liverpool Paddington Village	New Members' Meeting Open to AUDE Delegates Only
18:45 - 19:30 Novotel Liverpool Paddington Village	Transfers to Victoria Gallery & Museum The museum is approximately a 5-minute walk from the hotel. Should you require transport, this will be provided at the hotel where a shuttle bus transfer is available. Please note this transfer does not have capacity to accommodate all delegates.
19:00 - 23:00 Victoria Gallery & Museum	Welcome Drinks and Dinner Open to AUDE Delegates Only Kindly supported by Glancy Nicholls Architects
22:00 - 23:00 Victoria Gallery & Museum	Transfers back to Novotel Liverpool Paddington Village The museum is approximately a 5-minute walk back to the hotel. Should you require transport, this will be provided at the museum where a shuttle bus transfer is available. Please note this transfer does not have capacity to accommodate all delegates.

Programme

Tuesday 4 April 2023

Conference hosted by Simon Fanshawe, OBE

07:30 - 09:00 Novotel Liverpool Paddington Village	Breakfast for delegates staying at the Novotel Liverpool Paddington Village
08:00 - 09:00 Teaching Hub 502 - Ground Floor	Delegate Registration
08:00 - 09:00 Mountford Hall, Liverpool Guild of Students	Exhibition open - visit our conference supporters
09:00 - 09:05 Lecture Theatre 2, Teaching Hub 502 - First Floor	Welcome, introduction to conference and housekeeping Simon Fanshawe OBE, Co-Founder and Partner, Diversity by Design
09:05 - 09:15 Lecture Theatre 2, Teaching Hub 502 - First Floor	Welcome to the AUDE 2023 Conference The Right Honourable Lord Heseltine CH (pre-recorded video)
09:15 - 09:20 Lecture Theatre 2, Teaching Hub 502 - First Floor	Welcome from the University of Liverpool Dr Carol Costello, Director of People and Services, University of Liverpool
09:20 - 09:30 Lecture Theatre 2, Teaching Hub 502 - First Floor	Welcome from your conference host Syd Cottle, Director of Estates Management, University of Liverpool
09:30 - 10:30 Lecture Theatre 2, Teaching Hub 502 - First Floor	Plenary 1: Our place in the world: Liverpool City and the University of Liverpool Professor Fiona Beveridge, Executive Pro-Vice-Chancellor for the Faculty of Humanities & Social Sciences, University of Liverpool Professor Peter North, Professor of Alternative Economies, University of Liverpool Professor Alex Lord B.A., Ph.D., Lever Chair of Town and Regional Planning, University of Liverpool Facilitator: Simon Fanshawe OBE, Co-Founder and Partner, Diversity by Design
10:35 - 11:05 Mountford Hall, Liverpool Guild of Students	Refreshments and Exhibition

11:10 - 12:10	Workshop Sessions Block A
Session A1 Flexible Teaching 1, Teaching Hub 502 - Ground Floor	Unlocking ambitious action on net zero Professor Carly McLachlan, Director Tyndall Manchester, University of Manchester
Session A2 Teaching Room 5, Teaching Hub 502 - First Floor	Data is the new challenge Brad Crocker, Head of Building and Engineering, University of Plymouth Aislinn Wood, Estates Operations Programme Manager, University of Edinburgh Alan McNeil, Project Director, HD Property Consultants Ltd Dr Richard H.V. Jones, Head of Capital Projects, University of Oxford
Session A3 Flexible Teaching 2, Teaching Hub 502 - First Floor	Open house Q&A with John Amaechi OBE John Amaechi OBE, Organisational Psychologist and Founder of APS Intelligence
Session A4 Teaching Room 6, Teaching Hub 502 - First Floor	Lessons learned from digital twins implementations Ruth Kerrigan, Chief Operating Officer, Integrated Environmental Solutions Ltd Fiona Bradley, Professor of Structural Engineering Design, University of Glasgow
Session A5 Teaching Room 7, Teaching Hub 502 - First Floor	Procuring in a volatile market Steven Jenkins, Director, Tertiary Education Sector Lead, AECOM Tania Viljoen, Project Director, Tertiary Education and Science Sector, AECOM Arron Howell, Associate Cost Manager, AECOM Edd Burton, Head of Advisory, AECOM
Session A6 Teaching Room 4, Teaching Hub 502 - First Floor	A more aligned estate, for a leaner, more agile world! David Patterson, Partner, Make Architects Ziona Strelitz, Founder Director, ZZA Responsive User Environments Phil Armitage, Senior Partner, Max Fordham George Georgiou, Director, Elliott Wood Donncha O Shea, Partner, Gustafson Porter + Bowman Facilitator: James Redman, Project Lead, Make Architects Chair: Charlotte Livingston, Head of Strategic Programmes & Governance, University of Warwick and Co-Chair of the AUDE Space Management Special Interest Group
12:15 - 13:30 Mountford Hall, Liverpool Guild of Students	Lunch and Exhibition

Programme

13:35 - 14:35 Lecture Theatre 2, Teaching Hub 502 - First Floor	Plenary 2: The active role of allyship in leadership John Amaechi OBE, Organisational Psychologist and Founder of APS Intelligence Facilitator: Simon Fanshawe OBE, Co-Founder and Partner, Diversity by Design
14:40 - 15:20 Mountford Hall, Liverpool Guild of Students	Refreshments and Exhibition
15:25 - 16:10 Lecture Theatre 2, Teaching Hub 502 - First Floor	AGM Open to AUDE Members only
18:00 - 18:30 Novotel Liverpool Paddington Village	Transfers to Anfield Stadium
18:30 - 19:00 Anfield Football Stadium	Anfield Stadium Tours Booked Members Only
18:30 - 19:30 Anfield Football Stadium	Networking Dinner Drinks Reception Kindly supported by Robertson FM
19:30 - 23:00 Anfield Football Stadium	Networking Dinner Kindly supported by Pascall + Watson
22:30 & 23:00	Transfers back to Novotel Liverpool Paddington Village

Wednesday 5 April 2023

Conference hosted by Simon Fanshawe, OBE

07:30 - 09:00 Novotel Liverpool Paddington Village	Breakfast for delegates staying at the Novotel Liverpool Paddington Village
09:00 - 09:25 Teaching Hub 502 - Ground Floor	Delegate Registration
09:00 - 09:25 Mountford Hall, Liverpool Guild of Students	Exhibition open - visit our conference supporters
09:30 - 10:30 Lecture Theatre 2, Teaching Hub 502 - First Floor	Plenary 3: Being responsible James Breckon, Director of Estates, University of Warwick John Bailey, Associate Director, Turner and Townsend Lisa Hofen BA CIWFM MRICS MBA, Director of Estates, Coventry University Julian Robinson, Director of Estates, The London School of Economics and Political Science (LSE) Facilitator: Simon Fanshawe OBE, Co-Founder and Partner, Diversity by Design Session kindly supported by Overbury
09:30 - 10:30 Lecture Theatre 3, Teaching Hub 502 - First Floor	Plenary 4: Our planet, our community, our campus Hershil Patel, Head of Energy, Environment & Engineering, Department for Education Katerina Papavasileiou, Associate Director, Real Estate ESG and Responsibility, Construct Zero Advisory Board, Construction Leadership Council Helen Groves, Architect Director, Education Sector Lead, Atkins Chair: Terry Stocks MBE, Director, Head of Public Sector, Faithful+Gould Session kindly supported by Atkins and Faithful+Gould
10:35 - 11:15 Mountford Hall, Liverpool Guild of Students	Refreshments and Exhibition

Programme

Wednesday 5 April 2023

11:20 - 12:20

Workshop Sessions Block B

Session B1 Flexible Teaching 2, Teaching Hub 502 - First Floor	Open house Q&A with Roger Martin-Fagg Roger Martin-Fagg, Behavioural Economist, Martin-Fagg Associates Ltd
Session B2 Teaching Room 5, Teaching Hub 502 - First Floor	Keys to addressing diversity, equality, and inclusion in the UK Higher Education real estate Dominic Duffy, Project Manager, University of Glasgow Elis Foy, Head of FM, University of Surrey Jill Marlow, Project Manager (Major Projects), Nottingham Trent University Rebecca Samworth, Assistant Director Capital Development & Estate Strategy, University of East Anglia Colin Smith, Head of Facilities Management, Heriot-Watt University
Session B3 Teaching Room 6, Teaching Hub 502 - First Floor	Creating a staff listening culture – acting on insights, engaging managers, overcoming barriers and involving employees Lisa Hughes, Senior Consultant, People Insight Jane Tidswell, HE Sector Lead, People Insight
Session B4 Teaching Room 4, Teaching Hub 502 - First Floor	Student residence: challenging the norm John Ridgett, Associate Director, Atkins Paul Conway, Director, Architecture PLB Eleanor Magennis, Director of Estates, The Glasgow School of Art Roland Shanks, Former Strategic Projects Manager (Estates), University of London Mike Ratcliffe, Academic Registrar Chair: Robert Kingham, Head of University Advisory, Student First Group Host: Trevor Wills, Director of Estates & Facilities, University of Plymouth
Session B5 Teaching Room 7, Teaching Hub 502 - First Floor	Simple as ABC - assets, buildings, campus; the importance of BIM/IM to improving how we manage our Estate Brett Plant, Systems and Digital Information Manager, The University of Warwick and BIM4Estates Paul Eyden, Planning Manager, University of Bath and BIM4Estates Rich Draper, Head of BIM and Digital Assets, University of Birmingham and BIM4Estates

Session B6
Flexible Teaching 1,
Teaching Hub 502 - Ground Floor

Our place in the world: three international universities give their thoughts

Dave Irvin, Associate Vice President for Facilities, Florida State University and APPA International Board Chair
Kathleen Packer, Director Facilities Management, University of Wollongong
Nadeem Gafieldien, Director: Property Services, Stellenbosch University
Facilitator: Umesh Desai, Director of Estates, Nottingham Trent University and AUDE Chair

12:25 - 13:40
Mountford Hall,
Liverpool Guild of Students

Lunch and Exhibition

13:45 - 14:45
Lecture Theatre 2,
Teaching Hub 502 - First Floor

Plenary 5: A look at current global macroeconomic data and what to expect over the next 18 months

Roger Martin-Fagg, Behavioural Economist, Martin-Fagg Associates Ltd
Facilitator: Simon Fanshawe OBE, Co-Founder and Partner, Diversity by Design

14:50 - 15:30
Mountford Hall,
Liverpool Guild of Students

Refreshments and Exhibition

At 15:10, the passport prize draw along with the charity raffle prize draw will take place in the exhibition space

AUDE are proudly supporting Prevent Breast Cancer

15:35 - 16:35
Lecture Theatre 2,
Teaching Hub 502 - First Floor

Plenary 6: Real models, not role models

Hayley Mulenda, International Speaker, Author and Change Agent
Facilitator: Simon Fanshawe OBE, Co-Founder and Partner, Diversity by Design

16:35 - 16:40
Lecture Theatre 2,
Teaching Hub 502 - First Floor

Closing address and thanks

Syd Cottle, Director of Estates Management, University of Liverpool and AUDE Chair Elect

16:40 - 16:45
Lecture Theatre 2,
Teaching Hub 502 - First Floor

Call to AUDE 2024

Erin Peart, Director of Campus Services, Northumbria University

16:45 - 16:50
Lecture Theatre 2,
Teaching Hub 502 - First Floor

Closing remarks

Simon Fanshawe OBE, Co-Founder and Partner, Diversity by Design

18:30 - 19:00
Novotel Liverpool Paddington Village

Transfers to St George's Hall Liverpool

19:00 - 20:00
St George's Hall Liverpool

Gala Dinner Drinks Reception

Kindly supported by Morgan Sindall

20:00 - 00:00
St George's Hall Liverpool

Gala Dinner and AUDE Awards

AUDE Awards kindly supported by Gleeds

23:00 & 00:00
St George's Hall Liverpool

Transfers back to Novotel Liverpool Paddington Village

Session Synopses

Plenary 1: Our place in the world: Liverpool City and the University of Liverpool

Professor Fiona Beveridge, Executive Pro-Vice-Chancellor for the Faculty of Humanities & Social Sciences, University of Liverpool

Professor Peter North, Professor of Alternative Economies, University of Liverpool

Professor Alex Lord B.A., Ph.D., Lever Chair of Town and Regional Planning, University of Liverpool

Facilitator: Simon Fanshawe OBE, Co-Founder and Partner, Diversity by Design

Tuesday 4 April, 09:30 - 10:30
Lecture Theatre 2, Teaching Hub 502 - First Floor

Professor Fiona Beveridge, Professor Alex Lord and Professor Peter North will talk about the connectivity between the University of Liverpool and its well-connected role in the regeneration of the city with a focus on urban regeneration and outlining the case for inward national and international investment in the region and the impact of regeneration on communities, looking at better systems moving forward, local support structures and how we can support more.

Plenary 2: The active role of allyship in leadership

John Amaechi OBE, Organisational Psychologist and Founder of APS Intelligence

Facilitator: Simon Fanshawe OBE, Co-Founder and Partner, Diversity by Design

Tuesday 4 April, 13:35 - 14:35
Lecture Theatre 2, Teaching Hub 502 - First Floor

Join this session to hear John’s prepared remarks on ‘how can our estates and facilities directors do more to accelerate equality in the workplace’ followed by the opportunity to ask questions.

Plenary 3: Being responsible

James Breckon, Director of Estates, University of Warwick

John Bailey, Associate Director, Turner and Townsend

Lisa Hofen BA CIWFM MRICS MBA, Director of Estates, Coventry University

Julian Robinson, Director of Estates, The London School of Economics and Political Science (LSE)

Facilitator: Simon Fanshawe OBE, Co-Founder and Partner, Diversity by Design

Wednesday 5 April, 09:30 - 10:30
Lecture Theatre 2, Teaching Hub 502 - First Floor

With growing pressure to be responsible across our campuses, what does this mean? This panel invites the key topics of environmental, social value and carbon looking at what the future looks like and predicting where we might be in five, ten and even 15 years time along this pathway.

Plenary kindly supported by Overbury

Plenary 4: Our planet, our community, our campus

Hershil Patel, Head of Energy, Environment & Engineering, Department for Education

Katerina Papavasileiou, Associate Director, Real Estate ESG and Responsibility, Construct Zero Advisory Board, Construction Leadership Council

Helen Groves, Architect Director, Education Sector Lead, Atkins

Chair: Terry Stocks MBE, Director, Head of Public Sector, Faithful+Gould

Wednesday 5 April, 09:30 - 10:30
Lecture Theatre 3, Teaching Hub 502 - First Floor

The world has finally woken up to the global challenge and the fact we all need to play a part to save our planet. Within our community, we need to collaborate to develop sustainable and green infrastructure to best serve the public in this challenge. Through this collaboration between the community and Universities, everyone will benefit through a holistic approach to this. At a campus level, we need a thorough data driven approach to really challenge the need for physical space, and once we have minimised this need, to develop through retrofit a way of making our buildings as efficient as possible to meet our carbon targets.

Using current examples, our proposed session will explore how we have helped communities work closer with universities for mutual benefit to develop green infrastructure. We will also look at the tools we are using through data to ensure the optimum space is being provided. Finally, we will look at how retrofit can make buildings carbon neutral.

Plenary kindly supported by Atkins and Faithful+Gould

Plenary 5: A look at current global macroeconomic data and what to expect over the next 18 months

Roger Martin-Fagg, Behavioural Economist, Martin-Fagg Associates Ltd

Facilitator: Simon Fanshawe OBE, Co-Founder and Partner, Diversity by Design

Wednesday 5 April, 13:45 - 14:45
Lecture Theatre 2, Teaching Hub 502 - First Floor

A look at current global macroeconomic data and what to expect over the next 18 months. The four issues unique to the UK and the implications for growth;

- Why the Truss budget was utterly wrong
- The myths exposed
- The long haul for productivity gains
- Why house prices will not collapse

Plenary 6: Real models, not role models

Hayley Mulenda, International Speaker, Author and Change Agent

Facilitator: Simon Fanshawe OBE, Co-Founder and Partner, Diversity by Design

Wednesday 5 April, 15:35 - 16:35
Lecture Theatre 2, Teaching Hub 502 - First Floor

We don’t need more role models, we need more real models. We need to remember the power of authenticity and the power of vulnerability. Let’s make being real ideal. Maybe we shouldn’t inspire others to be another version of us, but a better version of themselves.

Being a real model is more powerful than being a role model.

Session Synopses

Session A1: Unlocking ambitious action on net zero

Professor Carly McLachlan, Director Tyndall Manchester, University of Manchester

Tuesday 4 April, 11:10 - 12:10
Flexible Teaching 1, Teaching Hub 502 - Ground Floor

In this session, Professor Carly McLachlan will be talking about the opportunities and challenges for delivering urgent, significant and sustained emissions reductions in university estates. The session will reflect on the range and nature of targets – and particularly around many of the targets across the sector being beyond our current delivery plans. As well as sharing experience of specific technical projects across attendees the session will also talk about the role of leadership, culture and skills in delivering ambitious decarbonisation plans.

Session A2: Data is the new challenge

Brad Crocker, Head of Building and Engineering, University of Plymouth

Aislinn Wood, Estates Operations Programme Manager, University of Edinburgh

Alan McNeil, Project Director, HD Property Consultants Ltd

Dr Richard H.V. Jones, Head of Capital Projects, University of Oxford

Tuesday 4 April, 11:10 - 12:10
Teaching Room 5, Teaching Hub 502 - First Floor

The collection and availability of data is ever increasing. The increased application of this data and the developing collaboration between data systems and facilities has the potential to improve both user experience and building performance within the Higher Education estate. As a result, rather than data being the new challenge, we see data as being the “new opportunity”.

This session reflects on this data opportunity. The Higher Education sector has begun its journey on realising the benefits of data and we discuss and share research, knowledge and experience that can help out on this journey; assisting in identifying the extent of the challenge, providing the basis of a roadmap to help Estates teams meet the challenge, the consideration of futureproofing in lieu of immediate investment, as well as highlighting some of the potential pitfalls.

Session A3: Open house Q&A with John Amaechi OBE

John Amaechi OBE, Organisational Psychologist and Founder of APS Intelligence

Tuesday 4 April, 11:10 - 12:10
Flexible Teaching 2, Teaching Hub 502 - First Floor

Join the workshop for the opportunity to ask John a question on the topic of Inclusion.

Session A4: Lessons learned from Digital Twin Implementations

Ruth Kerrigan, Chief Operating Officer, Integrated Environmental Solutions Ltd

Fiona Bradley, Professor of Structural Engineering Design, University of Glasgow

Tuesday 4 April, 11:10 - 12:10
Teaching Room 6, Teaching Hub 502 - First Floor

Fiona Bradley (University of Glasgow) and Ruth Kerrigan (Integrated Environmental Solutions Ltd.) will present an overview of performance enabled Digital Twins that were created for the University of Glasgow including new and existing buildings, looking at whole building life cycle from design through to operation and refurbishment.

The presentation will provide insights into the lessons learned from creating these Digital Twins and will present recommendations for the different stakeholders that need to be involved in the process for different building typologies, a methodology for how to engage with these stakeholders, the steps required to ensure successful implementation and how to identify any contractual and organisational barriers that go beyond the technical implementation.

Finally, the presentation will address the importance of not looking at Digital Twins for buildings as a one size fits all approach but understanding that each building needs to be treated as a unique entity. The importance of data analysis as part of the approach to implementing the performance enabled Digital Twin will also be demonstrated.

Session A5: Procuring in a volatile market

Steven Jenkins, Director, Tertiary Education Sector Lead, AECOM

Tania Viljoen, Project Director, Tertiary Education and Science Sector, AECOM

Arron Howell, Associate Cost Manager, AECOM

Edd Burton, Head of Advisory, AECOM

Tuesday 4 April, 11:10 - 12:10
Teaching Room 7, Teaching Hub 502 - First Floor

As building costs soar and economic uncertainty rises, tender price inflation continues to escalate reflecting that Contractors are now passing on the soaring building cost inflation which we have been witnessing since early 2021. This workshop will:

- Explore the macroeconomic factors influencing construction price inflation
- Explore key emerging themes, fixed price vs price fluctuation contracts
- Context of the Public Procurement Regulations
- Procurement strategies to minimise market impacts
- Areas for future review and exploration

Session Synopses

Session A6: A more aligned estate, for a leaner, more agile world!

David Patterson, Partner, Make Architects
Ziona Strelitz, Founder Director, ZZA Responsive User Environments

Phil Armitage, Senior Partner, Max Fordham

George Georgiou, Director, Elliott Wood

Donncha O Shea, Partner, Gustafson Porter + Bowman

Facilitator: James Redman, Project Lead, Make Architects

Chair: Charlotte Livingston, Head of Strategic Programmes & Governance, University of Warwick and Co-Chair of the AUDE Space Management Special Interest Group

Tuesday 4 April, 11:10 - 12:10

Teaching Room 4, Teaching Hub 502 - First Floor

In 2020, the Education Design Unit (EDU) – a collaboration between Make Architects, Elliott Wood, Max Fordham, Gustafson Porter + Bowman and ZZA Responsive User Environments – responded to a call from AUDE for insights on the optimisation of Higher Education estates. How can estates address the climate crisis and move towards net zero? How can the design of university buildings and spaces accommodate the requirements associated with the changing culture in learning and student living, further impacted by Covid? And how can existing building stock be harnessed for increased value? The EDU's Strategic Guide explores these questions in a comprehensive framework to make internal and external HE spaces more effective and sustainable and achieve contemporary relevance with value for money design.

Recognising the diverse interest groups that bear on an institution's success, responding to concerns expressed in interviews with directors of estates across nine UK universities and in workshop discussions with AUDE members, and backed by a range of case studies, the Guide offers a rounded methodology for evaluating the adaptive potential of existing HE space. The EDU propose this as a toolkit to inform initial studies and design brief development, helping estates teams evaluate existing assets, identify opportunities to add value, increasing flexibility and enhancing wellbeing.

Session B1: Open house Q&A with Roger Martin-Fagg

Roger Martin-Fagg, Behavioural Economist,
Martin-Fagg Associates Ltd.

Wednesday 5 April, 11:20 - 12:20

Flexible Teaching 2, Teaching Hub 502 - First Floor

Get answers to your economic questions.

Session B2: Keys to addressing diversity, equality, and inclusion in the UK Higher Education real estate

Dominic Duffy, Project Manager, University of Glasgow

Ellis Foy, Head of FM, University of Surrey

Jill Marlow, Project Manager (Major Projects), Nottingham Trent University

Rebecca Samworth, Assistant Director Capital Development & Estate Strategy, University of East Anglia

Colin Smith, Head of Facilities Management,
Heriot-Watt University

Wednesday 5 April, 11:20 - 12:20

Teaching Room 5, Teaching Hub 502 - First Floor

The Equality Act 2010 legally protects people from discrimination in the workplace and in wider society and is recognised across the Higher Education (HE) sector supporting nine main characteristics. These protected characteristics are considered during recruitment of students and staff in the sector, given support in terms and conditions and also the physical environment is adapted to eliminate discrimination and create a sense of belonging for all.

However we want to explore a tenth characteristic - neurodiversity. Neurodiversity refers to the different ways the brain can work and interpret information. It highlights that people think about things differently, have different interests and motivations, and are naturally better at some things and poorer at others. How is the HE sector responding to the challenges of inclusion of neurodiversity in the EDI toolkit, how can we implement neurodivergent learning in our recruitment and operations, our built environment and what does best practice look like, not only in the HE sector but in other real estate sectors?

Session B3: Creating a staff listening culture – acting on insights, engaging managers, overcoming barriers and involving employees

Lisa Hughes, Senior Consultant, People Insight

Jane Tidswell, HE Sector Lead, People Insight

Wednesday 5 April, 11:20 - 12:20

Teaching Room 6, Teaching Hub 502 - First Floor

What happens when organisations STOP listening? You may have all the channels in place for voice, but the data and insight isn't something you want to hear? Just like any relationship it will break; communication (two-way) is critical and needs to be facilitated. It is no secret that HEI still has a very hierarchical and bureaucratic approach, and if you consider the external factors and governance required you can understand why? However this organisational design does not need to be a barrier to creating a great community of colleagues, who are all clear on their purpose and have the autonomy and capability to have a fulfilling career within this sector. The challenge is academia, estates, professional service often have different operational purposes but in reality all should be connected to delivering student experience and performance. We will share some case studies and best practice from across the sector.

Session B4: Student residence: Challenging the norm

John Ridgett, Associate Director, Atkins

Paul Conway, Director, Architecture PLB

Eleanor Magennis, Director of Estates,
The Glasgow School of Art

Roland Shanks, Former Strategic Projects Manager (Estates),
University of London

Mike Ratcliffe, Academic Registrar

Chair: Robert Kingham, Head of University Advisory,
Student First Group

Host: Trevor Wills, Director of Estates & Facilities,
University of Plymouth

Wednesday 5 April, 11:20 - 12:20

Teaching Room 4, Teaching Hub 502 - First Floor

The session is hosted by the University Design Forum (formerly HEDQF) and will be introduced by University Design Forum Chair Trevor Wills (Director of Estates & Facilities, University of Plymouth). The session will take the form of a panel debate with interaction invited from the audience responding to the statement: 'the vast majority of purpose-built student residences are the same'. The session will start with a brief presentation of research undertaken on student residential schemes from the last five years across six UK cities and how they do or do not meet current needs. The panel will be invited to debate the following questions as well as others encouraged from the audience:

- Does the current model suit current ways of living and learning?
- How has Covid changed the learning landscape, had it changed already and are these changes for the long term (five, ten, 20 years +)?
- Does the current offer support future ways of living and learning?
- Is it time to build something different?
- If we agree change is needed, what are the blockers to change - planning, tax rules, funding etc?

#AUDE23
#workwithAUDE

Session Synopses

Session B5: Simple as ABC - assets, buildings, campus; the importance of BIM/IM to improving how we manage our Estate

Brett Plant, Systems and Digital Information Manager, The University of Warwick and BIM4Estates

Paul Eyden, Planning Manager, University of Bath and BIM4Estates

Rich Draper, Head of BIM and Digital Assets, University of Birmingham and BIM4Estates

Wednesday 5 April, 11:20 - 12:20

Teaching Room 7, Teaching Hub 502 - First Floor

Hear from the growing BIM4Estates group as they discuss their approach/developments within their organisation to improving Estates operations and strategic information.

The BIM4Estates group will discuss its objectives as a peer to peer network currently of 40 participants and how your institute can benefit from getting involved as they look to improve the sector.

The session will cover:

- A brief overview of the speakers priorities within their organisations
- Introduction to BIM4Estates
- The groups affiliation with NIMA
- The benefits they are hoping to achieve
- Why the group are prioritising certain tasks
- How they plan to tackle the challenges that lie ahead

Discussions will include conversation on BIM, GIS, CAFM, Digital Twins & Smart Campuses.

Session B6: Our place in the world: Three International Universities give their thoughts

Dave Irvin, Associate Vice President for Facilities, Florida State University and APPA International Board Chair

Kathleen Packer, Director Facilities Management, University of Wollongong

Nadeem Gafieldien, Director, Property Services, Stellenbosch Univeristy

Facilitator: Umesh Desai, Director of Estates, Nottingham Trent University and AUDE Chair

Wednesday 5 April, 11:20 - 12:20

Flexible Teaching 1, Teaching Hub 502 - Ground Floor

Join APPA, HEFMA and TEFMA representatives in this international interview style workshop to hear how the last three years have reshaped their universities, what the future holds and hear about their unique aspects of their universities.



Join AUDE at Northumbria University Newcastle, April 2024

More information will be available in due course...



Conference and Networking Dinner Host

“We are delighted to welcome back Simon Fanshawe OBE to host our 2023 annual conference. Through his organisation Diversity By Design, Simon works to transform the organisational performance of organisations in the public, private and third sectors.”

Simon is a co-founder and partner of Diversity by Design; a ground-breaking consultancy that works with organisations to develop diversity solutions to strategic questions, in order to build greater performance: www.diversitybydesign.co.uk

Diversity by Design’s current clients include: Aberdeen, Cardiff, Manchester, Nottingham, Sheffield Universities; Co-op Food, Sussex & Surrey Police, The Frontline, Thomson Reuters, Coventry City Council, the CBI, Amey Construction, Kohler/Mira, East Sussex Fire & Rescue. From 2007-2013, Simon was chairman of the University of Sussex Governing Council and on the Board of The Museum of London, The Kaleidoscope Trust, and Housing & Care 21. He is currently on the Boards of Brighton Dome and Festival and POWERful Women. Simon was a co-founder of one of the most successful lobby and campaign groups in recent times; the lesbian and gay equality organisation Stonewall. He is now a co-founder of the Kaleidoscope Trust, supporting LGBTI activists abroad.

Simon is also a broadcaster, writer and pundit. He was awarded an OBE in the New Year’s Honours list 2013 for services to Higher Education, and was made an Honorary Doctor of the University of Sussex for services to diversity and human rights in the same year.



Simon Fanshawe, OBE
Co-Founder and Partner,
Diversity by Design

AUDE Awards and Gala Dinner Host

Born and bred in Liverpool, Peter Edge spent over 30 years policing the streets of his home city, gathering stories from a world that most of us will hopefully never experience, and giving him his unique take on the ‘lighter’ side of policing the inner city, which he’s been sharing with after dinner audiences for four decades.

Pitched straight out of training and into the Toxteth riots of 1981, he worked a wide variety of policing roles, including drugs, vice, and CID. He’s appeared on the BBC’s “Crimewatch” programme, lectured to international audiences on the subject of organised crime, and acted as a script consultant on a film that went on to win awards at the Edinburgh film festival.

On retirement he started his own business in the hospitality industry. He’s worked for the NHS and acted as a consultant on the NATO Summit 2014. Last year he realised a long-held ambition to perform stand-up comedy at the Edinburgh Fringe.

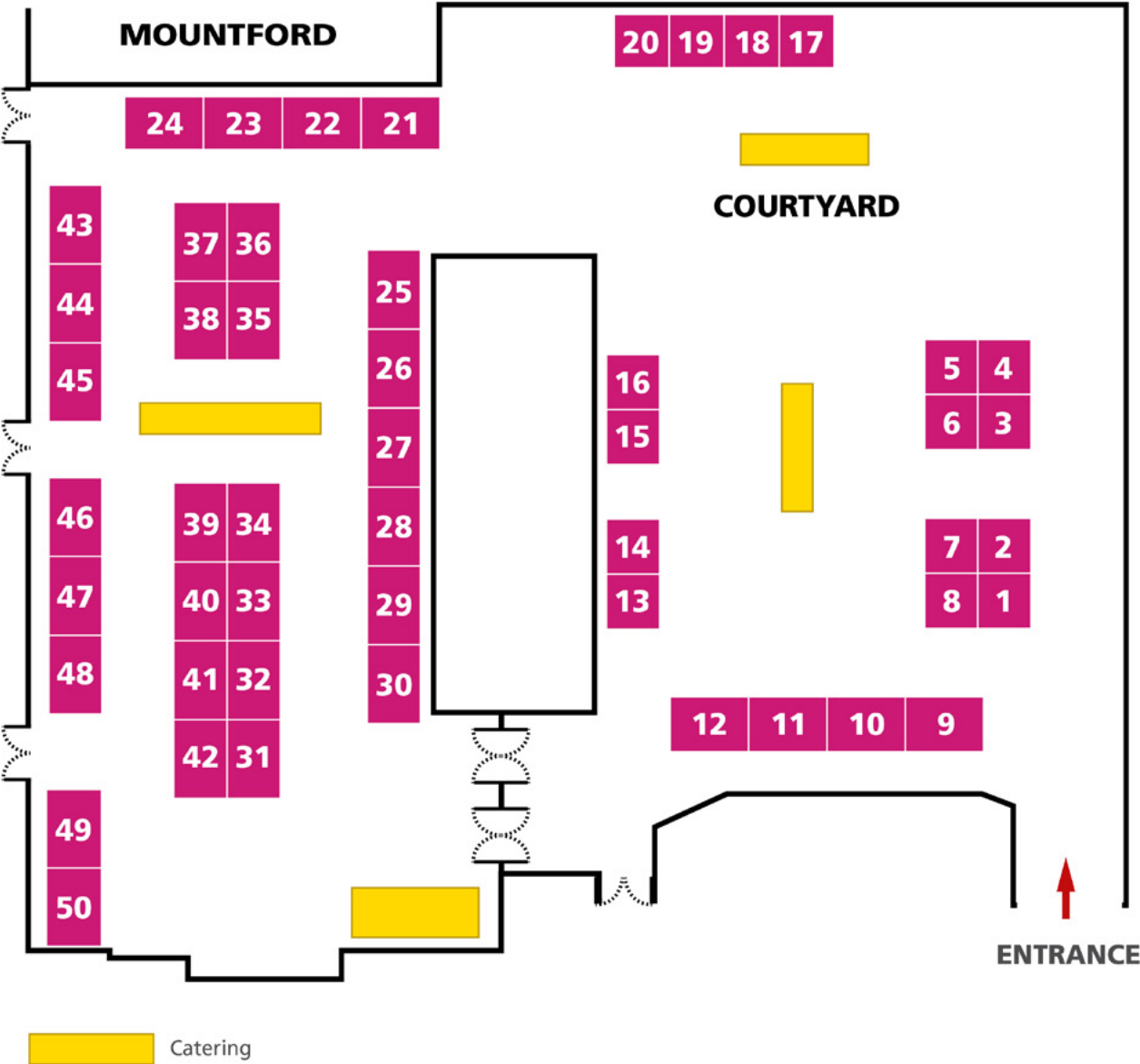
Married with three daughters, his interests include rugby, skiing, fell walking, cycling, and learning to speak Spanish. In 2017 he walked across Spain on his first Camino de Santiago and liked it so much he’s done it twice more, by different routes, recording his Camino ‘Plodcast’ along the way.



Peter Edge

#AUDE23
#workwithAUDE

Exhibition Plan



Exhibitor List

Alphabetical

Company	Stand Number
AA Projects	36
ADP	42
AECOM	5
Arcadis	24
Arup	19
AssetWorks	31
Atkins and Faithful+Gould	21
BDP	45
Bevan Brittan LLP	14
BSS Intelligent Solutions	50
BW: Workplace Experts	27
CBRE Managed Services Ltd	12
Cundall	40
Curtins	37
design build facades UK LTD	47
EVACCESS	8
Gerald Eve	2
Gleeds	39
HASSELL	16
Hawkins\Brown	30
IES Ltd.	1
INVIDA	29
Mace	38
Morgan Sindall	35
Multivista	43
Nicholas Hare Architects	28
Oakleaf Surveying	18
Overbury	34
Planon	26
Portakabin Ltd	7
PPL Training	44
PTS	15
Rider Levett Bucknall	46
Ridge	25
Savills	6
Schneider Electric UK Ltd	48
Scott Tallon Walker Architects	32
Shepherd Epstein Hunter	11
Sheppard Robson	9
SIEMENS	20
SMC2 Ltd	4
Stride Treglown Architecture	13
The Anywhere Company	23
The Energy Consortium	3
Trend Control Systems Ltd	17
Trilogy	49
Turner & Townsend	33
Unite Students	22
Vital Energi	41
Willmott Dixon	10

Numerical

Company	Stand Number
IES Ltd.	1
Gerald Eve	2
The Energy Consortium	3
SMC2 Ltd	4
AECOM	5
Savills	6
Portakabin Ltd	7
EVACCESS	8
Sheppard Robson	9
Willmott Dixon	10
Shepherd Epstein Hunter	11
CBRE Managed Services Ltd	12
Stride Treglown Architecture	13
Bevan Brittan LLP	14
PTS	15
HASSELL	16
Trend Control Systems Ltd	17
Oakleaf Surveying	18
Arup	19
SIEMENS	20
Atkins and Faithful+Gould	21
Unite Students	22
The Anywhere Company	23
Arcadis	24
Ridge	25
Planon	26
BW: Workplace Experts	27
Nicholas Hare Architects	28
INVIDA	29
Hawkins\Brown	30
AssetWorks	31
Scott Tallon Walker Architects	32
Turner & Townsend	33
Overbury	34
Morgan Sindall	35
AA Projects	36
Curtins	37
Mace	38
Gleeds	39
Cundall	40
Vital Energi	41
ADP	42
Multivista	43
PPL Training	44
BDP	45
Rider Levett Bucknall	46
design build facades UK LTD	47
Schneider Electric UK Ltd	48
Trilogy	49
BSS Intelligent Solutions	50

Conference Supporter Profiles



AA PROJECTS

AA Projects

Stand 36

AA Projects is a management and property consultancy who prides itself on achieving best value for clients, providing specialist knowledge of property solutions, procurement, financing and the complete management of the construction process.

C: Ian Goodman, Director

E: iangoodman@aaprojects.co.uk

W: www.aaprojects.co.uk



ADP

Stand 42

ADP designs innovative, award-winning spaces and sustainable campuses, embedding and measuring social value, wellbeing, and belonging.

C: Michelle Fletcher, Marketing Associate

E: marketing@adp-architecture.com

W: www.adp-architecture.com



AECOM

Stand 5

AECOM is the world's trusted infrastructure consulting firm, partnering with clients to solve the world's most complex challenges and build legacies for generations to come.

C: Steven Jenkins, Regional Director, Healthcare, Science and Tertiary Education, UK & Ireland, AECOM

E: steven.jenkins2@aecom.com

W: www.aecom.com



ARCADIS

Arcadis

Stand 24

Arcadis is the leading global Design & Consultancy firm for natural and built assets. Applying our deep market sector insights and capabilities for our clients to deliver exceptional and sustainable outcomes.

C: Suzanne Lloyd, Partner & Sector Leader Health, Universities & Science

E: suzanne.lloyd@arcadis.com

W: www.arcadis.com



Arup

Stand 19

Dedicated to sustainable development, Arup is a collective of 16,000 designers, advisors and consultants working across 140 countries to shape a better world.

C: Paul Webber, Director and UKIMEA Education Business Leader

E: paul.webber@arup.com

W: www.arup.com



AssetWorks

Stand 31

With 30+ years of experience, AssetWorks is a facilities and estates management solutions provider exclusively dedicated to the successful management of education-focused built environments.

C: Paul Sharp, Account Executive

E: paul.sharp@assetworks.com

W: www.goassetworks.com

Notebook and Pen



Members of the SNC-Lavalin Group

Atkins and Faithful+Gould

Stand 21

Atkins and Faithful+Gould are natural disrupters and innovators; combining extensive experience in each sector with market-leading expertise and new tools and techniques that transform infrastructure to deliver a more sustainable lived environments for everyone.

C: Helen Groves, Director, Education Lead, Atkins Marcus Lyon, Director, Education Lead, Faithful+Gould

E: helen.groves@atkinsglobal.com
marcus.lyon@fgould.com

W: www.atkinsglobal.com
www.fgould.com

Headline Supporter



BDP

Stand 45

BDP designs learning and research environments that inspire. Championing sustainable design principles we create healthy, multi-functional buildings and spaces that meet the needs of academics, researchers and students.

C: Catherine Bunting, UK Marketing Manager

E: catherine.bunting@bdp.com

W: www.bdp.com



Bevan Brittan LLP

Stand 14

Bevan Brittan is a UK-Top 100 national law firm. Our specialist Higher Education lawyers provide well informed, pragmatic legal solutions, whilst delivering value for money.

C: Helen Stead, Business Development Executive

E: helen.stead@bevanbrittan.com

W: www.bevanbrittan.com



BSS Intelligent Solutions

Stand 50

Intelligent Solutions is a data driven digital solution providing a detailed understanding of a plant room's assets. Expected lifespan, condition, anticipated spend integrates design and supply of products.

C: Jon Addison, Director of Client Services

E: jonathon.addison@bssgroup.com

W: www.bssindustrial.co.uk



BW: Workplace Experts

Stand 27

BW: Workplace Experts was founded in 2000 by a couple of innovation-minded individuals. Our aim is to make the refurbishment journey simpler, more collaborative and much more reliable.

C: Leanne Baird, Head of Marketing

E: leanne.baird@wearebw.com

W: www.wearebw.com



CBRE Managed Services Ltd

Stand 12

CBRE is a leading provider of FM & Real Estate services. We self-deliver hard services and use specialist supply partners to provide soft services.

C: Jennifer Chatterton, Business Development Director

E: jennifer.chatterton@cbre.com

W: www.cbre.co.uk

Conference Supporter Profiles continued



Cundall
Stand 40

Cundall is a global, independent, multi-disciplinary consultancy delivering sustainable engineering and design solutions across the built environment.

C: Bill Wilkins, Associate Director
E: b.wilkins@cundall.com
W: www.cundall.com



Curtins
Stand 37

We're an independent and award-winning engineering consultancy, with 14 offices in the UK and Ireland, adding value and specialist services across the built environment lifecycle.

C: Oliver Delucia-Crook, Board Director
E: oliver.crook@curtins.com
W: www.curtins.com



design build facades UK LTD
Stand 47

The UK's leading design build overcladding specialist with unrivalled track record of decarbonising the HE/FE estate through a fabric first approach delivering proven performance.

C: Cliff Woodhouse, Business Development Director
E: mail@dbfacades.com
W: www.dbfacades.com



EVACCESS
Stand 8

Providing dignified and comfortable evacuation and access solutions to ensure there are no barriers for disabled and reduced mobility persons. Access equality for all.

C: Julia Pons, Director
E: info@evaccess.uk
W: www.evaccess.uk



GERALDEVE
Gerald Eve
Stand 2

Gerald Eve is a real estate advisory business known as the leaders in property advice to university institutions and the education sector.

C: William Ray, Partner
E: wray@geraldeve.com
W: www.geraldeve.com



Glancy Nicholls Architects Ltd
Stand N/A

One of the Midlands' leading architectural practices, with an impressive Higher Education portfolio, highly skilled and experienced staff and a strong reputation for excellence.

C: Simon Jesson, Director
E: s.jesson@glancynicholls.com
W: www.glancynicholls.com

Welcome Dinner



Gleeds
Stand 39

With 30+ years' experience in higher education, Gleeds will help you decarbonise your estate and unlock investment opportunities to create a campus for the future.

C: Heather Makin, Director
E: heather.makin@gleeds.com
W: gb.gleeds.com

AUDE Awards



HASSELL
Stand 16

HASSELL is an international collaborative design practice with studios in the United Kingdom, Australia, China, South East Asia and the United States of America.

C: Julian Gitsham, Principal and Global Education & Science Sector Leader
E: jgitsham@hassellstudio.com
W: www.hassellstudio.com



Hawkins\Brown
Stand 30

Hawkins\Brown is a professional multi-disciplinary architectural team with expertise ranging from conservation to modern technology and from landscape to interior design.

C: Julia Roberts, Partner, Education & Research Sector Lead
E: juliaroberts@hawkinsbrown.com
W: www.hawkinsbrown.com



IES Ltd.
Stand 1

IES is an innovative climate tech company providing digital twin technology and associated consulting services for decarbonised, healthy and resilient built environments around the world.

C: Ian Pyburn, Business Development Manager
E: ian.pyburn@iesve.com
W: www.iesve.com



INVIDA
Stand 29

INVIDA is a Space, Asset and Service Management Platform. An easy to implement SaaS solution used by University, NHS and private sector estate teams.

C: Bradley Williamson, Business Quality and Development Director
E: bradley.williamson@invida.co.uk
W: www.invida.co.uk



Mace
Stand 38

Mace is a global company of experts in shaping the built environment. They provide consulting, construction and operations services for global building and infrastructure projects.

C: Terry Spraggett, Managing Director for PREACH
E: terry.spraggett@macegroup.com
W: www.macegroup.com

Digital

Conference Supporter Profiles continued



Morgan Sindall

Stand 35

Morgan Sindall Construction's purpose is to create inspiring places that enhance the communities in which we live, learn, work, play, care and protect.

C: Emma Ratcliffe, Senior BD Manager
E: emma.ratcliffe@morgansindall.com
W: www.morgansindallconstruction.com

Gala Dinner Drinks Reception



Multivista

Stand 43

Multivista, part of Hexagon, is the world's leading full-service visual construction documentation provider, contracted on over 4 billion square feet of construction.

C: Alan Bryant, Director
E: a.bryant@multivista
W: www.multivista.com

NHA

Nicholas Hare Architects

Stand 28

Nicholas Hare Architects is an award-winning design practice, education specialists with a sustainable track record delivering good value through exemplary and collaborative university projects.

C: James Taylor, Partner
E: info@nicholashare.co.uk
W: www.nicholashare.co.uk



Oakleaf Surveying

Stand 18

Independent specialists in the collection, preparation and analysis of all estates and buildings information for more than 30 years.

C: Danny Punter, Business Development Manager
E: danny.punter@theoakleafgroup.co.uk
W: www.theoakleafgroup.co.uk



Optimised

Stand N/A

Optimised is delivering quantifiable business outcomes to our clients through a comprehensive suite of energy services and technologies while driving a net-zero carbon agenda.

C: Gary Bark, Sales & Marketing Director
E: gary.bark@optimised.net
W: www.optimised.net

Digital



Overbury

Stand 34

Overbury deliver outstanding Higher Education fit outs based on decades of experience with universities across the UK. We believe brilliant minds deserve exceptional facilities.

C: Emma Keyse, Business Development Manager
E: emma.keyse@overbury.com
W: www.overbury.com

Headline Supporter



Pascall+Watson

Stand N/A

Specialists in the design and delivery of educational learning environments. Our portfolio includes laboratories, research facilities, libraries, student accommodation, teaching spaces, estates strategies and masterplans.

C: Satinder Bancil, Director
E: satinder.bancil@pascalls.co.uk
W: www.pascalls.co.uk

Networking Dinner



Planon

Stand 26

150+ higher education institutions use Planon software to manage their real estate, maintenance, space and campus planning, capital projects, events and services, and sustainability initiatives.

C: Alison Wright, Marketing Manager UK
E: alison.wright@planonsoftware.com
W: www.planonsoftware.com



Portakabin Ltd

Stand 7

For over 60 years', Portakabin has been market leading in the manufacturer of modular buildings, from stand-alone classrooms through to award-winning, state-of-the-art STEM facilities.

C: Hannah Gains, Business Develop Manager (Education)
E: hannah.gains@portakabin.com
W: www.portakabin.com



PPL Training

Stand 44

An industry-leading provider of accredited Safe Systems of Work and Technical Compliance training. Our centres are in York, Slough and Livingston. Also offering select remote/ bespoke/on-site training.

C: Jonathan Eland, Sales Director
E: jonathan.eland@ppltraining.co.uk
W: www.ppltraining.co.uk

PTS

PTS

Stand 15

PTS develops Smart Campus Strategies for University Masterplans and provides independent design on capital programmes, including networks/Wi-Fi, AV, collaboration technologies, IT infrastructure and Security.

C: Mark Perrett, Public Sector Lead
E: mark.perrett@pts.global
W: www.pts.global/aude



Rider Levett Bucknall

Stand 46

RLB is an independent global construction consultancy bringing imagination to life within the built environment. Together, we're creating a better tomorrow through flawless execution today.

C: Stephen Scott, Partner - National Head of Education
E: stephen.scott@uk.rlb.com
W: www.rlb.com

Conference Supporter Profiles continued



Ridge

Stand 25

Ridge is an award-winning, multidiscipline property and construction consultancy specialising in higher education. Our partner-led approach delivers scale and expertise with a personal touch.

C: Mark Nieuwenhuys, Partner

E: markn@ridge.co.uk

W: www.ridge.co.uk

Water Bottles and Digital



Robertson FM

Stand N/A

Robertson FM is one of the UK's largest family-owned support services businesses. We provide Hard and Soft FM across Scotland, Wales and England.

C: Tracy Wilson, Business Development Director, England

E: t.wilson@robertson.co.uk

W: www.robertson.co.uk

Networking Dinner Drinks Reception



Savills

Stand 6

Savills is one of the UK's leading multi-sector global property advisers. Within the education sector we offer a comprehensive property consultancy service to educational institutions, affiliated commercial ventures, developers, occupiers, funders and investors.

C: Sadie Janes, Director, Savills Education Lead

E: sjanes@savills.com

W: www.savills.co.uk/education



Schneider Electric UK Ltd

Stand 48

Schneider Electric is your digital partner for Sustainability and Efficiency, empowering all to make the most of our energy and resources.

C: Robert Insull, Segment Marketing Manager

E: robert.insull@se.com

W: www.se.com/uk/en/



Scott Tallon Walker Architects

Stand 32

We are award-winning architects with a strong focus on strategic overview, zero carbon and innovative solutions to help shape the flexible campus of the future.

C: Peter Dudley, Director

E: peter.dudley@stwarchitects.com

W: www.stwarchitects.com



Shepherd Epstein Hunter

Stand 11

Friendly and creative architects, we're interested in creating social value. Our HE work ranges from internal refurb through faculty buildings to campus masterplans.

C: Charles Dokk-Olsen, Director

E: dokk-olsen@seh.co.uk

W: www.seh.co.uk



Sheppard Robson

Stand 9

Our HE portfolio spans estates strategies to specialist buildings and continues to re-invent itself to drive forward pedagogical change, meeting the challenges estates departments face.

C: Alex Smith, Partner

E: alex.smith@sheppardrobson.com

W: www.sheppardrobson.com



SIEMENS

Stand 20

Siemens are a technology company that combines a rich heritage with the spirit of innovation. We empower our customers to transform the everyday and shape the future of how we live and learn.

C: Lynsey Jeffers, Universities Key Account Manager

E: lynsey.jeffers@siemens.com

W: www.siemens.com/universities



Signify

Stand N/A

Signify is the world leader in lighting for professionals, consumers and lighting for the Internet of Things.

C: Paul Haythornthwaite, Commercial Lead – Education

E: paul.haythornthwaite_1@signify.com

W: www.signify.com

Room Drop Gifts



SMC2 Ltd

Stand 4

SMC2 design and build innovative low carbon solutions for sport and play buildings for the needs of today and future generations.

C: Ken Mercer, Business Development Manager

E: ken.mercer@smc2-construction.com

W: www.smc2-construction.com



Stride Treglown Architecture

Stand 13

Stride Treglown is an carbon neutral architectural practice and a Certified B Corporation®. We stand for Better Places, Empowered People and Resilient Partnerships.

C: Cora Kwiatkowski, Divisional Director & Head of Universities

E: cora.kwiatkowski@stridetreglown.com

W: www.stridetreglown.com



The Anywhere Company

Stand 23

We create beautifully uncomplicated software to help businesses run and grow. You can get started today using our preconfigured templates to tackle your challenges.

C: Scott Gemmell, Commercial Director

E: sgemmell@theanywherecompany

W: www.theanywherecompany.com



The Energy Consortium

Stand 3

TEC are a member owned not-for-profit public buying organisation. We are the energy experts who will support our members to achieve sustainable energy solutions.

C: Adam Clarke, Managing Director

E: adam.clarke@tec.ac.uk

W: www.tec.ac.uk

#AUDE23
#workwithAUDE

Conference Supporter Profiles continued



Trend Control Systems Ltd

Stand 17

Trend Control Systems is a major supplier of Building Energy Management Solutions (BEMS) to the Education sector throughout Europe.

C: Pradeep Singh, Intelligent Buildings Solution Consultant
E: pradeep.singh@trendcontrols.com
W: www.trendcontrols.com

TRILOGY

Trilogy

Stand 49

Trilogy creates inspiring campuses for the education sector. We transform buildings with untapped potential into dynamic places that foster learning, student experience and entrepreneurship.

C: Laurence Jones, Head of Leasing and Asset Management
E: laurence@trilogyproperty.com
W: www.trilogyproperty.com



Turner & Townsend

Stand 33

At Turner & Townsend, we are making the difference; transforming performance for a green, inclusive and productive world.

C: Gareth Morgan, Director
E: gareth.morgan@turntown.co.uk
W: www.turnerandtowntsend.com

#AUDE23
#workwithAUDE



Unite Students

Stand 22

Unite Students is the UK's largest owner, manager and developer of purpose-built student accommodation serving the country's world-leading Higher Education sector.

C: Tom Brewerton, Group Development Director
E: thomas.brewerton@unitestudents.com
W: www.unite-group.co.uk



Vital Energi

Stand 41

Vital Energi provide sustainable energy generation, distribution and management solutions which reduce carbon emissions and energy bills for the public sector throughout the UK.

C: Andrew Wightman, Pre-Construction Director
E: andrew.wightman@vitalenergi.co.uk
W: www.vitalenergi.co.uk



Willmott Dixon

Stand 10

Willmott Dixon is a privately-owned construction and interior fit-out group that was declared the UK's best big company to work for at 2022 Best Companies Awards.

C: Stephen Hyde, Sector Lead - HEFE, Willmott Dixon Interiors
E: stephen.hyde@willmottdixon.co.uk
W: www.willmottdixon.co.uk

Useful Information

AUDE Contact Numbers:

Jane White 07714 742 670
Corinne Merriman 07543 221 076

Delegate Accommodation

Situated at the Novotel Liverpool Paddington Village, check-in is after 15:00 and check-out is before 11:00.

Exhibition

Exhibitors can be found in the Mountford Hall, Liverpool Guild of Students.

Registration

Delegate registration is on Monday at the Novotel Liverpool Paddington Village and registration on Tuesday and Wednesday is at the Teaching Hub 502, University of Liverpool.

Taxis

Alpha Taxis: 0151 722 8888
ComCab: 0151 298 2222
Britannia Taxi: 0151 708 7080

Trains

The Campus is a ten minute walk from the nearest mainline station at Lime Street. Take the main exit and turn left into Lime Street. Then turn left again at the Britannia Adelphi Hotel and continue up Brownlow Hill towards the Metropolitan Catholic Cathedral and Red Brick Building with its clock tower.

Venues

All conference activity takes place at the University of Liverpool and Novotel Liverpool Paddington Village.

Dinners

The welcome dinner will take place at the Victoria Gallery & Musuem, University of Liverpool, the networking dinner at Anfield Stadium and the gala dinner at St George's Hall.

PREDICT PREVENT PROTECT

prevent
breast
cancer

WE ARE THE ONLY UK CHARITY
ENTIRELY DEDICATED TO THE PREDICTION AND
PREVENTION OF BREAST CANCER.
WE'RE COMMITTED TO FREEING THE
WORLD FROM THE DISEASE ALTOGETHER.

Prevent Breast Cancer is so grateful
to AUDE for choosing them as their
chosen charity for this conference.



Scan the QR code to donate today!
Help support Prevent Breast
Cancer's vital work.



To find out more, please visit preventbreastcancer.org.uk

PREVENT BREAST CANCER • Registered in England No. 4831397 • Registered Charity No. 1109839

This Year's Charity

**AUDE are proud to announce that our charity
for the 2023 AUDE Conference is Prevent
Breast Cancer.**

Prevent Breast Cancer is the only UK charity committed solely to predicting and preventing breast cancer. Promoting early diagnosis, screening and lifestyle changes, Prevent Breast Cancer believe they can stop the problem before it starts. And being situated at the only breast cancer prevention centre in the UK, they are right at the front-line in the fight against the disease.

The Raffle Prize Draw will take place in the exhibition space at 15:10 on Wednesday 5 April.

Please see the selection of prizes below, kindly donated by our supporters. You can purchase tickets from both the delegate and exhibition registration desks. There will also be a game of Heads and Tails played on Tuesday evening at the Networking Dinner, so remember to bring some cash with you!



Fortnum and Mason Hamper



1 delegate place on any of our 1 day Fire Safety or Legionella (Water Hygiene) training courses

Bevan Brittan 

£100 Ivy Restaurant Voucher



Philips Hue Starter Kit



Two return tickets to Paris on the Eurostar



Sustainable Gift Hamper from Social Stories Club



The Overbury Business Development Team for a day... Penny Mitchell, Alex Stork, Cathy Heywood, Sarah Mitchell, and Emma Keyse will be yours for a day, for a Social Value initiative of your choice. Fundraising, litter picking, or local community support – you decide! (With carbon in mind, this prize is on offer to UK Mainland Universities only).



Q10C Mini Drone with 720P HD Camera

AUDE aude.ac.uk | 01509 22 88 36 | @AUDE_news | #AUDE23

BECOME AN AUDE BUSINESS PARTNER

Extend your reach and develop your relationships with estates directors and their teams with the AUDE business partner programme. With 3,500 members across 185 UK higher education institutions, business partners have an exclusive opportunity to raise their profile amongst the sector. Work collaboratively with AUDE and institutions on bespoke projects that will develop and innovate the sector. Enquire soon to be considered for one of these limited opportunities.

Contact AUDE's executive director Jane White for an informal discussion: jane@aude.ac.uk | 01509 22 88 36
Full package details and application forms can be found at aude.ac.uk/businesspartners

CAPITAL COST DATABASE

The AUDE Capital Cost Database is an online repository of cost data from completed capital projects of all types and sizes. It is freely available for AUDE members within estates and facilities. The functionality has been developed by AECOM specifically for the HE sector and allows you to model future costs and benchmark against other projects elsewhere in the sector.

Data submissions

Data submissions are accepted on a rolling basis to ensure the database grows, please submit project details when you have them. To take part, login or for further details visit www.aude.ac.uk/capital or email info@aude.ac.uk

AUDE SUMMER SCHOOL

For aspiring directors of estates and facilities management

12 – 15 June 2023, University of Northampton
£1,750 +VAT pp | Development fund contribution available

This residential programme for aspiring directors of estates and facilities management covers the key skills, strategic approach and leadership required to deliver a world class estate masterplan, influence your senior colleagues and develop a strong team.

You will hear from current estates directors, VC's and special guest evening speakers, all facilitated by a leadership consultant.

The price covers three nights' accommodation, meals, training, course materials and a follow up event in 2023. Course assignments and group work will be set and all delegates will present their project ideas to a panel of judges, with the winning group each receiving a complementary place at AUDE's 2024 annual conference.

To register for this event visit aude.ac.uk/events/summer-school or for further questions, email info@aude.ac.uk

SUSTAINABILITY LEADERSHIP SCORECARD

For a definitive picture of your institution's sustainability performance.

The Sustainability Leadership Scorecard (SLS) is an 'all in one' tool which captures data and performance from several sources listed below and builds one definitive picture of your sustainability performance.

Log on via aude.ac.uk/sls. For login details email info@aude.ac.uk or call 01509 22 88 36.

Leadership & Governance

- Leadership
- Staff Engagement & HR
- Health & Wellbeing
- Risk

Estates & Operations

- Waste
- Biodiversity
- Construction
- Water
- Travel
- Adaptation
- Energy

Learning, Teaching & Research

- Learning & Teaching
- Research
- Student Engagement

Partnership & Engagement

- Community & public engagement
- Business & Industry interface
- Procurement & Supplier engagement
- Food & Drink

Use the SLS to;

- Communicate with leadership teams
- Collaborate with fellow HEIs
- Benchmark against your chosen institutions
- Map to existing sustainability reporting used in the sector
- Produce outputs mapped to UN sustainable development goal (SDGs)

This free tool is available to all institutions; ensure your team responsible for sustainability are logging in and using it.

NEW TOOL FOR MEMBERS: EMR DIGITAL

AUDE are pleased to launch a new digital tool that extends the current Estates Management Report (EMR) into an online version.

Use it to benchmark your HEI against others in the sector, manipulate charts and extract data. It contains figures from 2012/13 until this latest submission 2021/22.

EMR Digital will allow you:

- Customise charts based on date range, peer groups and sector segments
- Create your own peer groups to benchmark against
- Plot your institution on any chart
- Hover over charts to see exact values of each data point
- Download data and charts into excel, pdf or jpeg
- Save charts as a favourite and return to later

Login here using your existing AUDE details: aude.ac.uk/emrdigital

For any questions, please email info@aude.ac.uk

AUDE COACHING AND WORK SHADOWING

AUDE are looking for volunteers to join our work shadowing and coaching programmes. We are specifically targeting members from estates and FM backgrounds as well as AUDE business partners, who can share their knowledge to support career development, good practice, and networking opportunities.

Our work shadowing programme allows individuals to get hands-on experience in an alternative role, whether that's within the same institution or from within any of AUDE's 180 member institutions.

Our coaching programme provides an excellent platform for members to expand their skill set through tailored one-on-one conversations.

If you'd like to volunteer your time and help others progress their learning and career, please contact us at info@aude.ac.uk.

AUDE

ASSOCIATION OF UNIVERSITY DIRECTORS OF ESTATES